

# ***EchoLab***

## ***Otoacoustic Emissions System***

**TEOAE – DPOAE- SPONTANEOUS**



***Screening and/or clinical in one device***

***Programmable parameters via PC or Notebook***

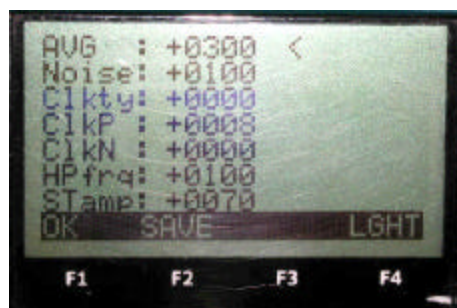
# TEOAE- DPOAE- SPONTANEOUS



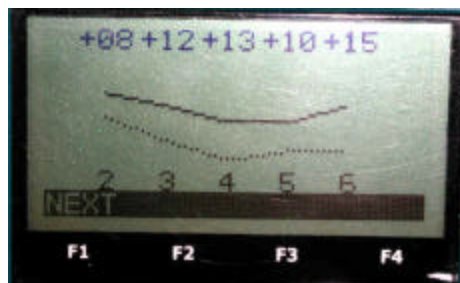
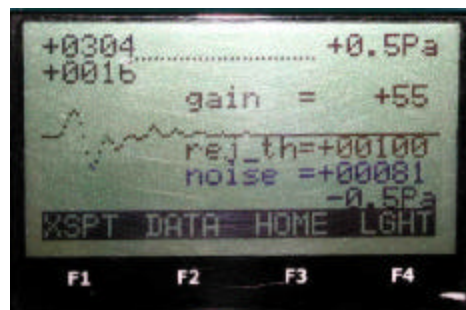
The new EchoLab, Otoacoustic emissions system allows, in one device, the flexibility of a small handheld system and the functionality of a clinical system.

The EchoLab can be used as a stand alone device (w/o PC), can carry out a screening test, thanks to a fast Pass/ Refer algorithm and by means of a built-in alphanumeric keyboard can facilitate the entry of the patient's data.. Up to 350 tests can be stored into the internal memory. A bar-code option is available for an automatic data entry

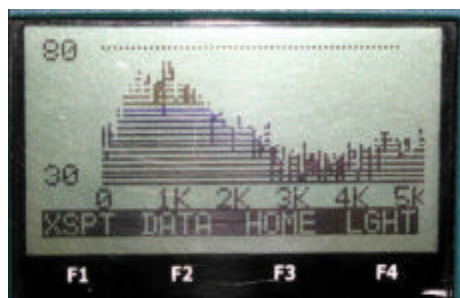
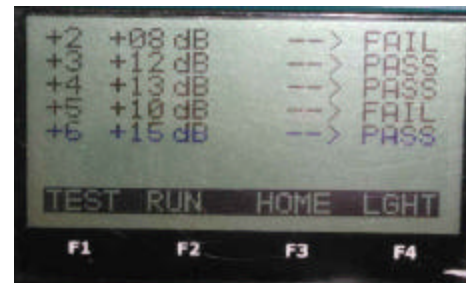
The EchoLab connected to a PC or Notebook, through additional software, permits the visualization and further analyses of Spontaneous, Transient and Distortion product test recordings . All data transferred to the host PC are stored in an internal database, for easy data manipulation and retrieval.



The EchoLab allows the user to **choose** the test-protocol (TEOAE or DPOAE), and if necessary to **modify** the parameters.



For DPOAE testing the display is switch-able from DP\_Gram data to an automatic evaluation of each tested frequency (PASS – FAIL).



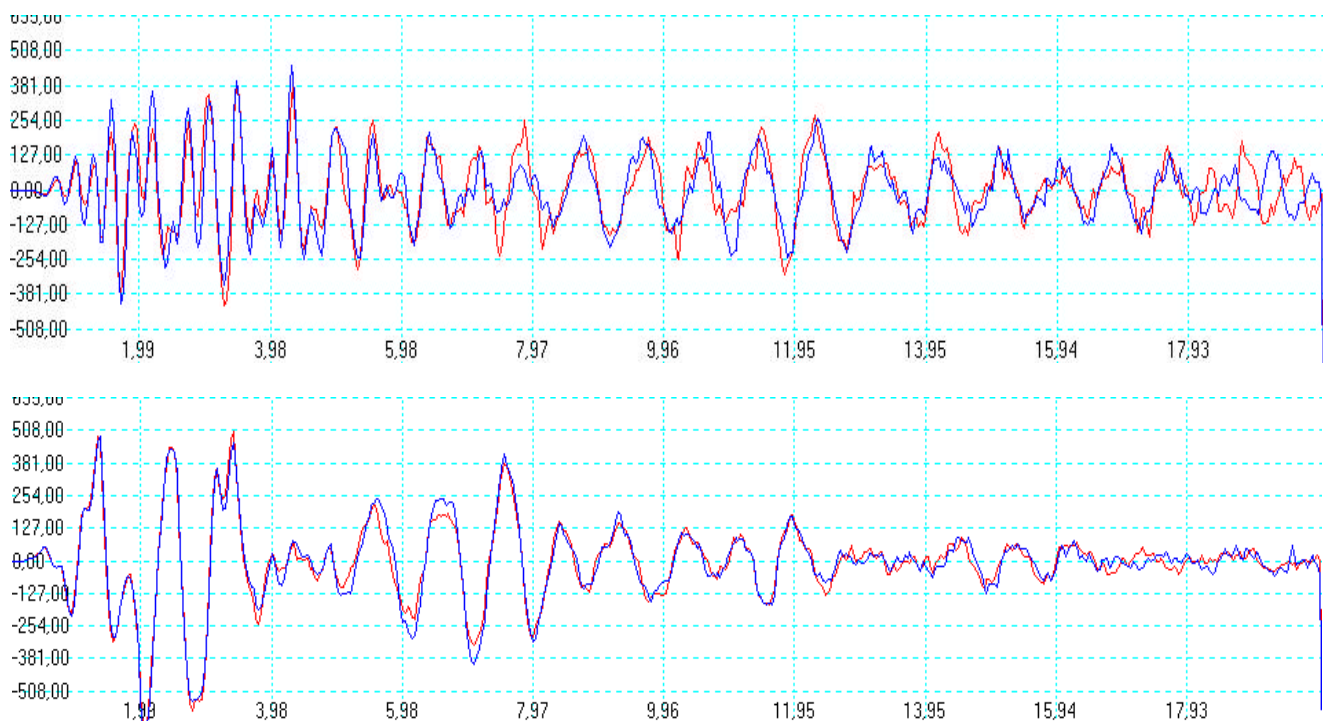
For TEOAE testing the display is switch-able from cross-spectrum data to an automatic evaluation of each tested frequency .



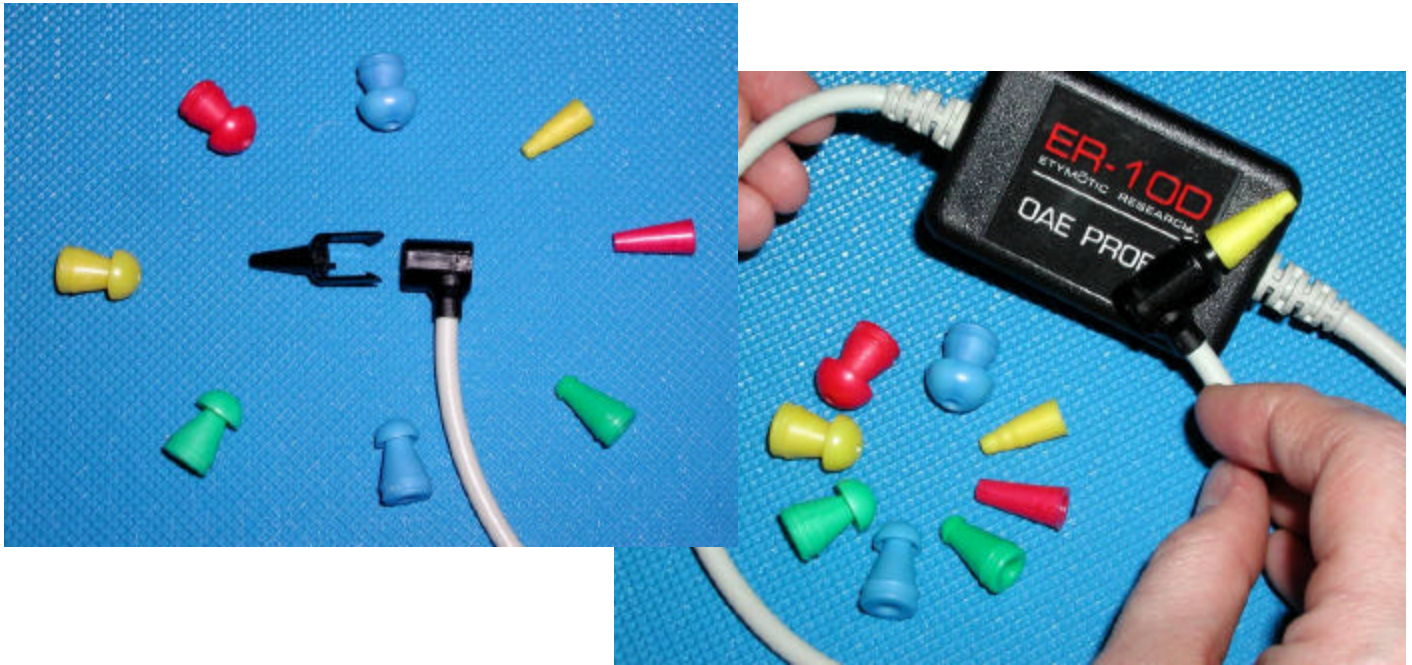




The software of data transfer and analysis allows to EchoLab screening device to be transformed in a clinical equipment.  
 The data (TEOAE or DPOAE traces), spectrum in frequency, DP-Gram, Cross-Correlation can be visualized.  
 All tested parameters can be modified in the host-PC and then transferred to Echolab. This feature is useful for the creation of custom-made protocol.



## The Probe



The probe, is very light and can be easily dismantled for cleaning. It is very resistant and insensitive to shocks and tearing, because the transducers are placed into a small box together the preamplifier circuit.

The connection between the probe and the small box is made by small silicon tubes, without any electric wires.

## Technical specifications

Two programmable sinusoidal generator from 0 to 50 KHz, with modulation in amplitude , frequency , ph.

A click generator (positive, negative, bipolar), in alternate to first sinusoidal generator.

Two programmable attenuators from 0 to 120 Db step of 2 Db for each sinusoid.

Noise generator at wide band with programmable attenuator.

A/D 16 bit converter

IrDa interface

LCD display at 128x64 matrix

Keyboard at 36 pushbuttons

ABR pre-amplifier connector (Optional)

### **LABAT s.r.l.**

Viale Garibaldi, 21  
30173 - MESTRE (VE)

Tel. +39 041 2667686

Fax +39 041 616124

[www.labat.it](http://www.labat.it)

e-mail: [info@labat.it](mailto:info@labat.it)

### **DISTRIBUTOR:**